

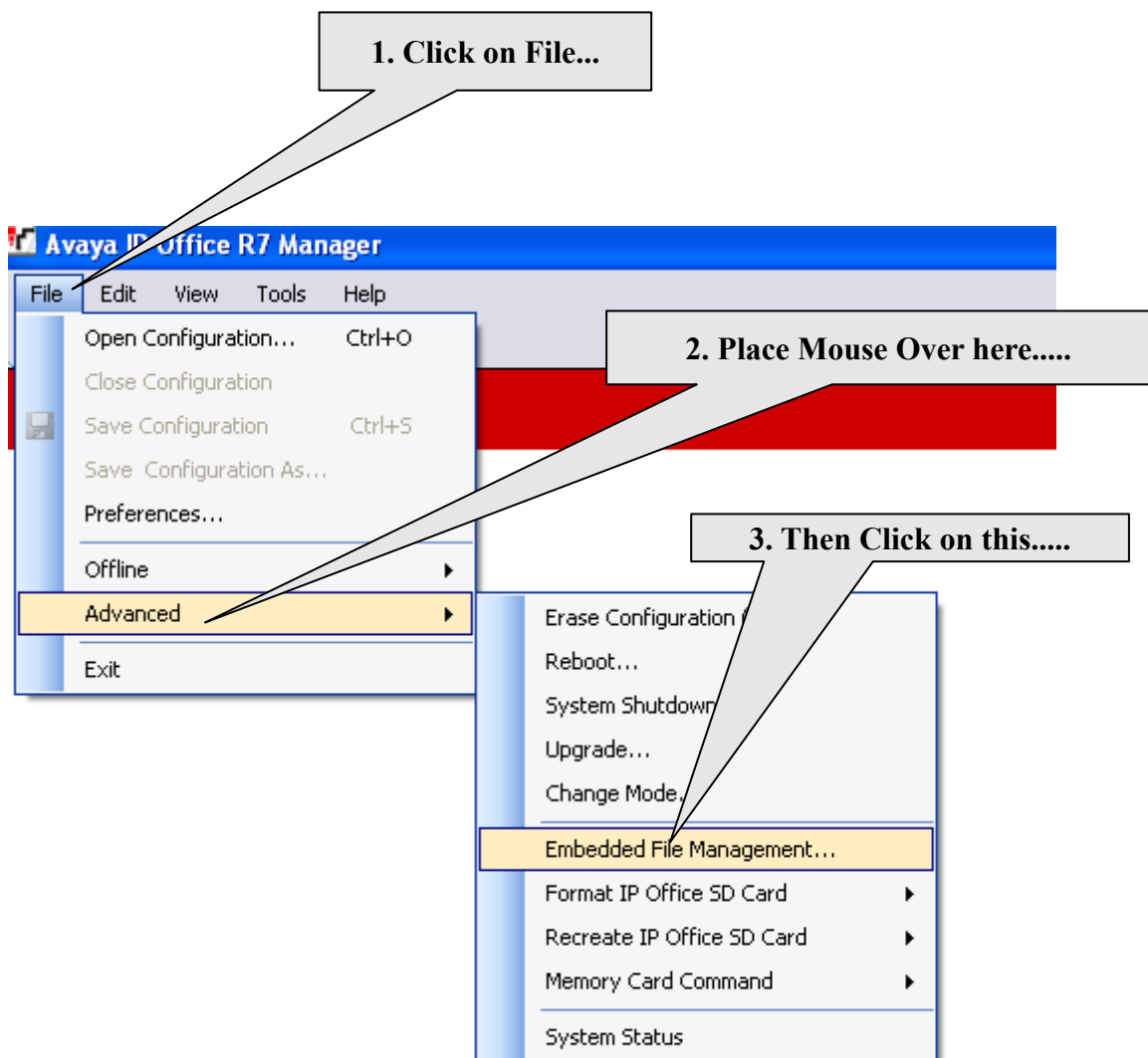
IPO Essential or Partner Edition

Upload System Files from Manager to SD Card

Telquest Tech Support

There are cases where the newest Binary (.bin) files are not transferred to the SD Card when Upgrading a KSU. This method will place the Binary Files in the SD Card.

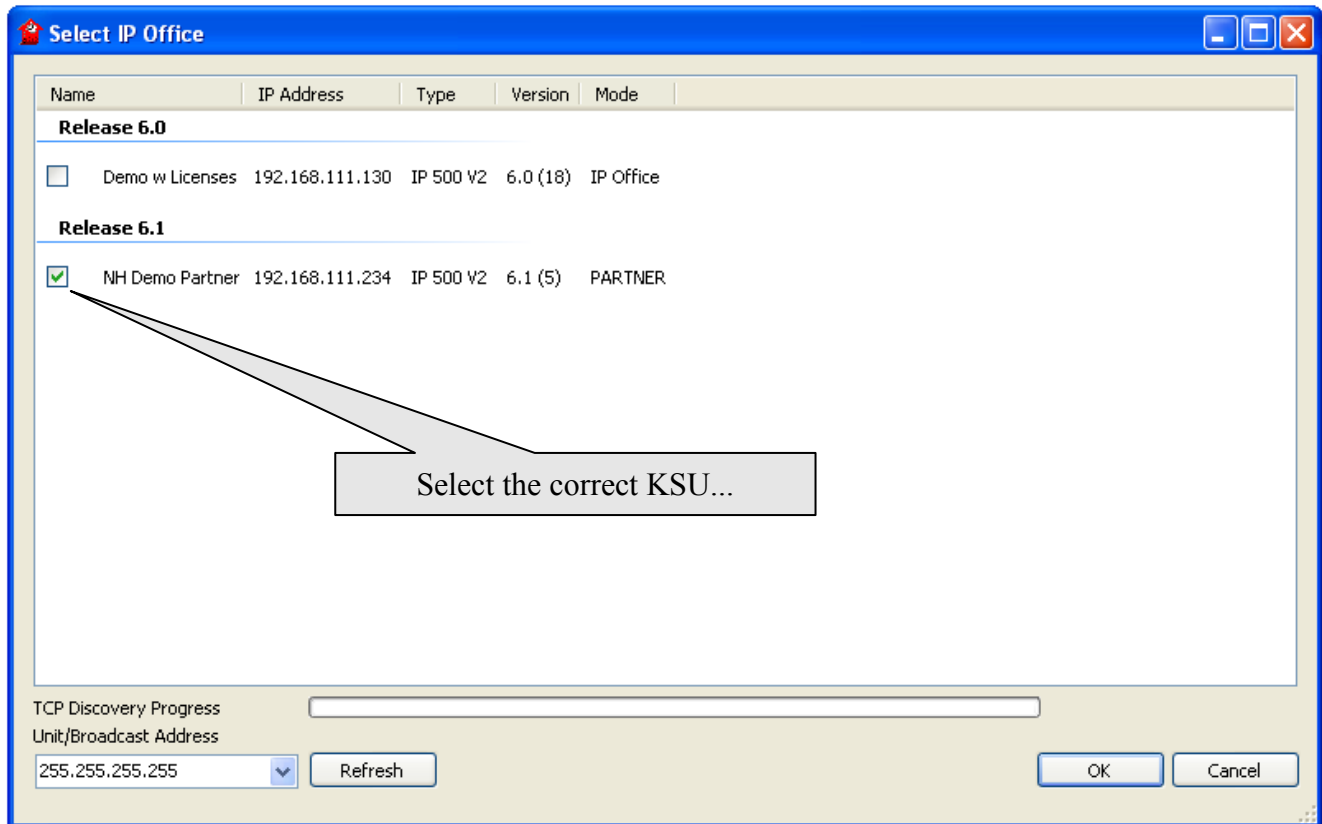
Run the Manager program and **DO NOT OPEN THE CONFIGURATION TO THE KSU.....**



IPO Essential or Partner Edition

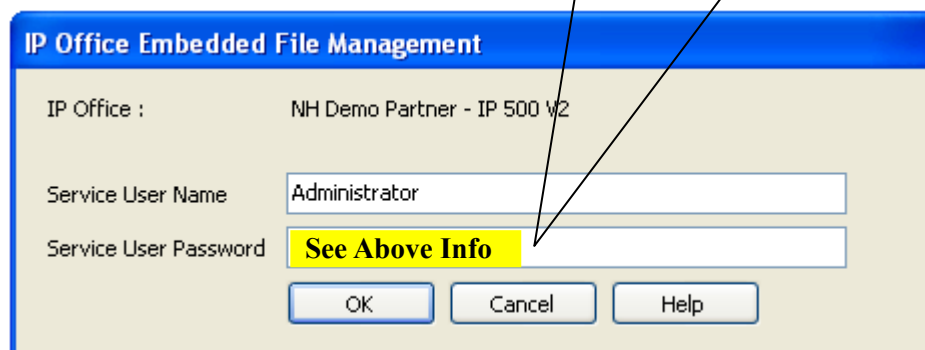
Upload System Files from Manager to SD Card

Now select and connect to your KSU



Then log on to it.....

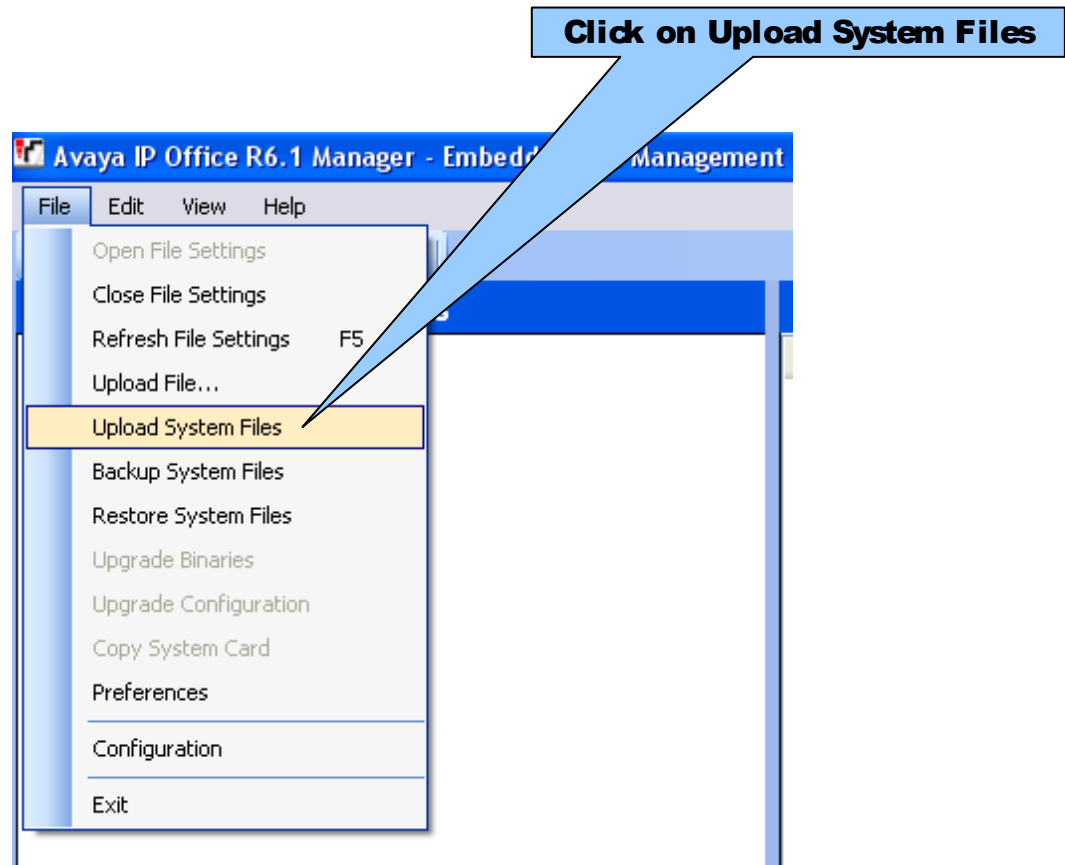
Release 8 and up - Password is Administrator
Release 6 and 7 - Password is password



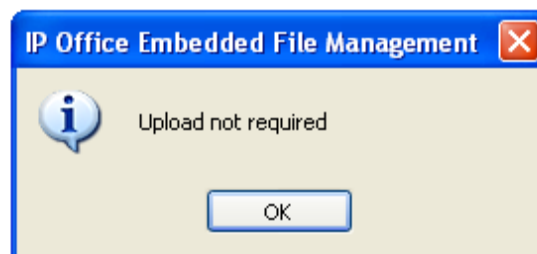
IPO Essential or Partner Edition

Upload System Files from Manager to SD Card

You will be directed to the Embedded File Management screen



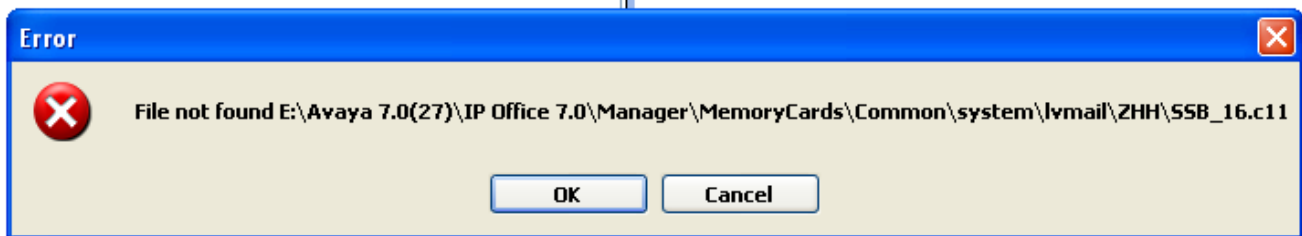
If the updated files were already there, then it will say this:



IPO Essential or Partner Edition

Upload System Files from Manager to SD Card

You may see something like this appear up to 10 times.

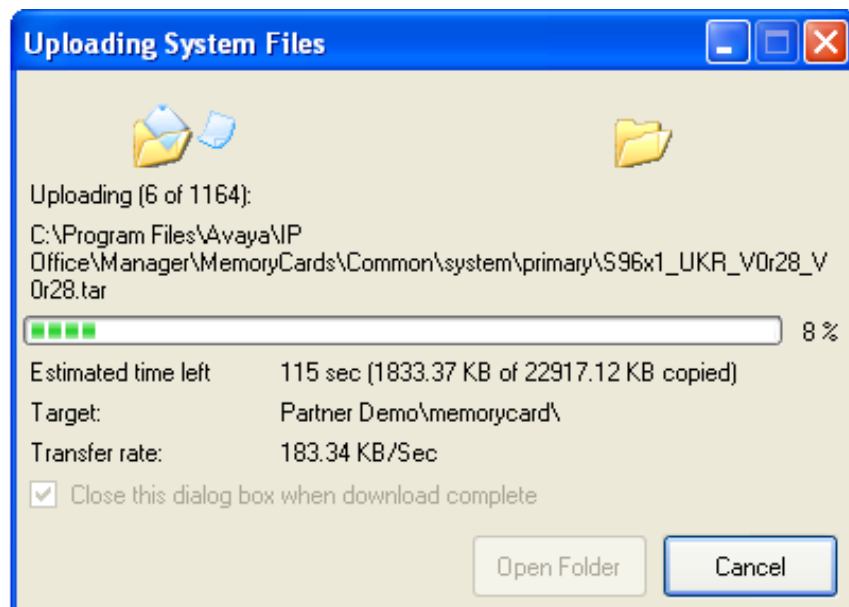


They are not needed, so just click the OK Button each time it appears.

I believe they are foreign language files for the Voice Mail/Auto Attendant.

If the Upload takes place it will take about 35 to 45 minutes or longer.

You will see a Pop Up showing that the files are being transferred to the SD Card.



When it is done, power down the KSU for at least 30 seconds and then power back up.